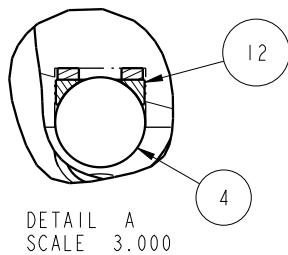
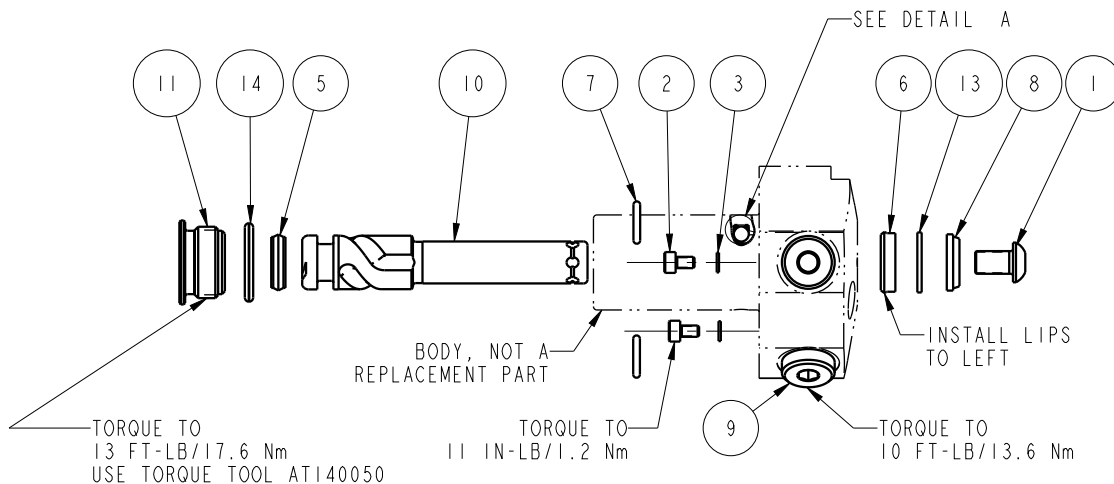



NO	QTY	PART NO	DESCRIPTION	STD SEAL KIT	FKM SEAL KIT
1	1	21500008	SCREW, CAP, BTNH, M6 X 10, ALY		
2	2	21500018	SCREW, CAP, SOCH, M3 X 5, ALY		
3	2	21500200	WASHER		
4	3	23600014	BALL, STEEL, ALLOY, .156	X	X
5	1	39010037	SEAL, CROWN, 3/8x9/16x5/32	X	39V10037
6	1	39010038	SEAL, BEVEL, 7/16 x 3/32 x 5/8	X	39052014
7	2	39050042	O-RING, (-011)	X	39051025
8	1	39053004	WIPER, SNAP-IN, (7/16)	X	X
9	2	43068004	PLUG, SOCH, G1/8		
10	1	47510504	PLUNGER, SC, HS, 2KN, RH		
11	1	81400028	RETAINER, SC, HS, 450		
12	3	90199956	ASSY, BALLSEAT, SC, 450	X	X
13	1	39F54000	BU RING, (-111)	X	X
14	1	39V00036	O-RING, (-908)	X	X
N/A	N/A	60414501	KIT, SEAL, STANDARD		
N/A	N/A	6V414501	KIT, SEAL, FKM		



<b>PARTS LIST</b>	 <b>VEKTEK</b> VEKTEK, INC. 1334 E. SIXTH AVE. P.O. BOX 625 EMPORIA, KS. 66801 U.S.A.
	ASSEMBLIES AFFECTED 41460221
PARTS LIST, ASSY, SC, TF, TC, 2KN, DA, RH SIZE A <b>MPL1404</b>	REV C SHEET 1 OF 1

C	5279	RELEASE	ALS	4/25/24
REV	IN ACCORDANCE WITH ECN	EFFECTIVE DATE	REVISED BY	DATE
DRW BY:	JDW	<b>DRAWING STATUS: Released</b> PRODUCTION APPROVED FOR RELEASED STATUS ONLY		
DATE:	03/13/13			